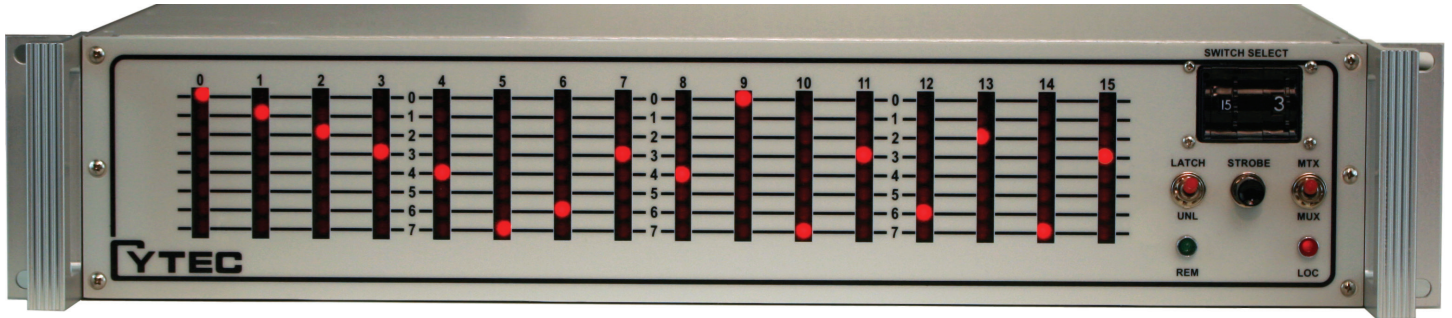




Programmable switching systems for automated test,  
data acquisition and communications

2555 Baird Road, Penfield, New York 14526 • cytec-ate.com • sales@cytec-ate.com • (585)381-4740

## The Simplest, Most Versatile General Purpose Switching System Available! Cytec's LXA/128 Mainframe

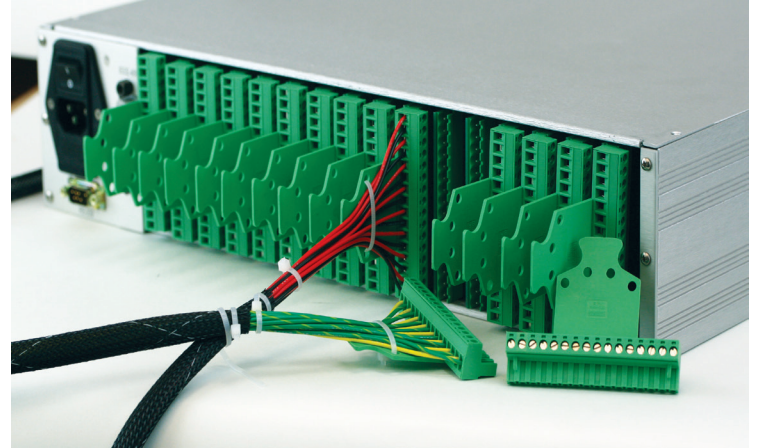


### FEATURES:

- Standard off-the-shelf 19" rack mount LX/128 Mainframe 2U chassis with 16 LX8/G2-ST Switch Modules installed.
- Wide variety of switching configurations are possible with simple external wiring changes. NxM matrix or 1xN mux.
- 128 two pole Type A general purpose, Type P power or Type HV high voltage relays.
- Easy to use Screw Terminal connectors - mating connectors included in system price.
- GPIB and RS232 or 10/100 Ethernet LAN and RS232 remote control.
- Full LED display & status feedback to controlling computer give visual indication and aids debugging.
- Manual Control for use without computer control.
- Simple command set and addressing.
- Five Year Warranty! • Field proven for 30 years.

### Common Two Pole Configurations:

Matrix	Mux
16x8	128x1
32x4	Two 64x1's
64x2	Four 32x1's
Two 32x2's	Eight 16x1's
Four 16x2's	64x1x64
Two 16x4's	Two 32x1x32's
Hundreds more possible!	



### SWITCH CHARACTERISTICS

	Type A	Type P	Type HV
Switch Voltage	110V	500V	1000V
Switch Current	1.0A	8.0A	0.1A
Breakdown Voltage	750V	1400V	1500V
Operating Time	3ms	10ms	1ms
Life Expectancy	10 <sup>8</sup>	10 <sup>7</sup>	10 <sup>8</sup>
Contact Rating	50VA	150VA	100VA

**Type A relay version \$ 8,345.00**

**Type P relay version \$ 8,985.00**

**Type HV relay version \$ 8,825.00**

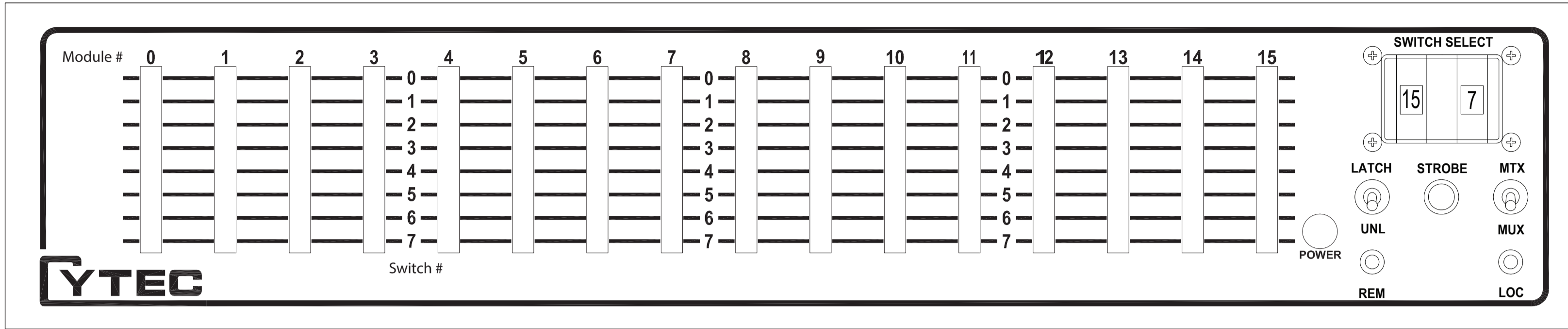
Specify GPIB and RS232 or LAN and RS232 Control.  
Specify relay type. 4 weeks ARO. Smaller and larger systems are available. Many other module types available.  
Call or e-mail for quotes or technical help.

• View more of Cytec's LX Series offerings.

• Link to Cytec home page with over 500 different switching products.

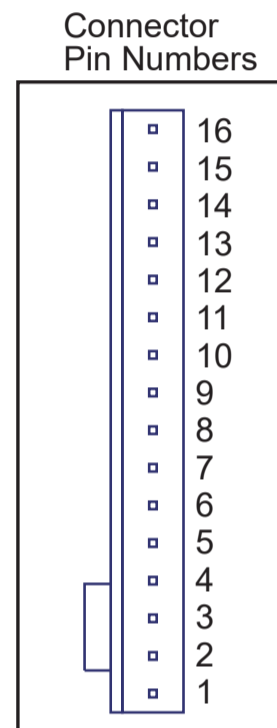
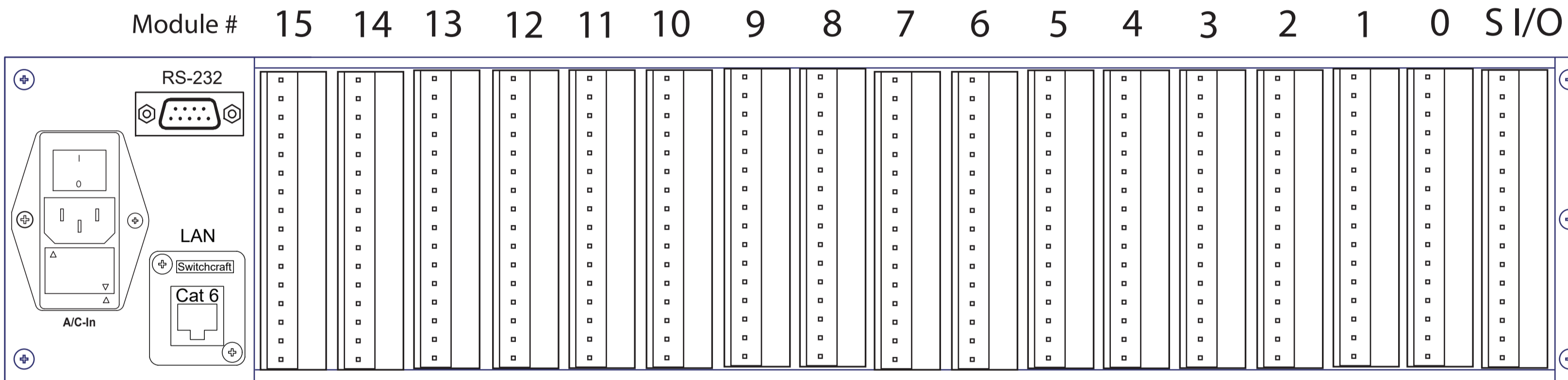
• Contact Cytec at 1-585-381-4740 or sales@cytec-ate.com

# LXA/128-M Versatile Configuration Switch



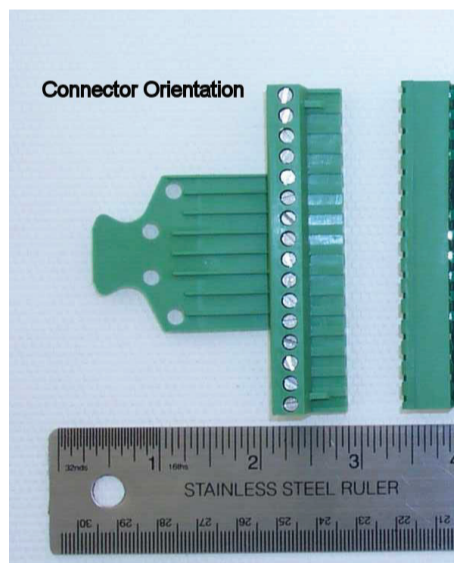
3.5" height  
19" Rack Mount  
15" deep  
Approximately 25 lbs  
Shown with MC/16x8  
pushwheel manual control

Rear Panel shown with  
LAN and RS232 Control  
(GPIB Optional)  
Selectable 110/220 AC Input

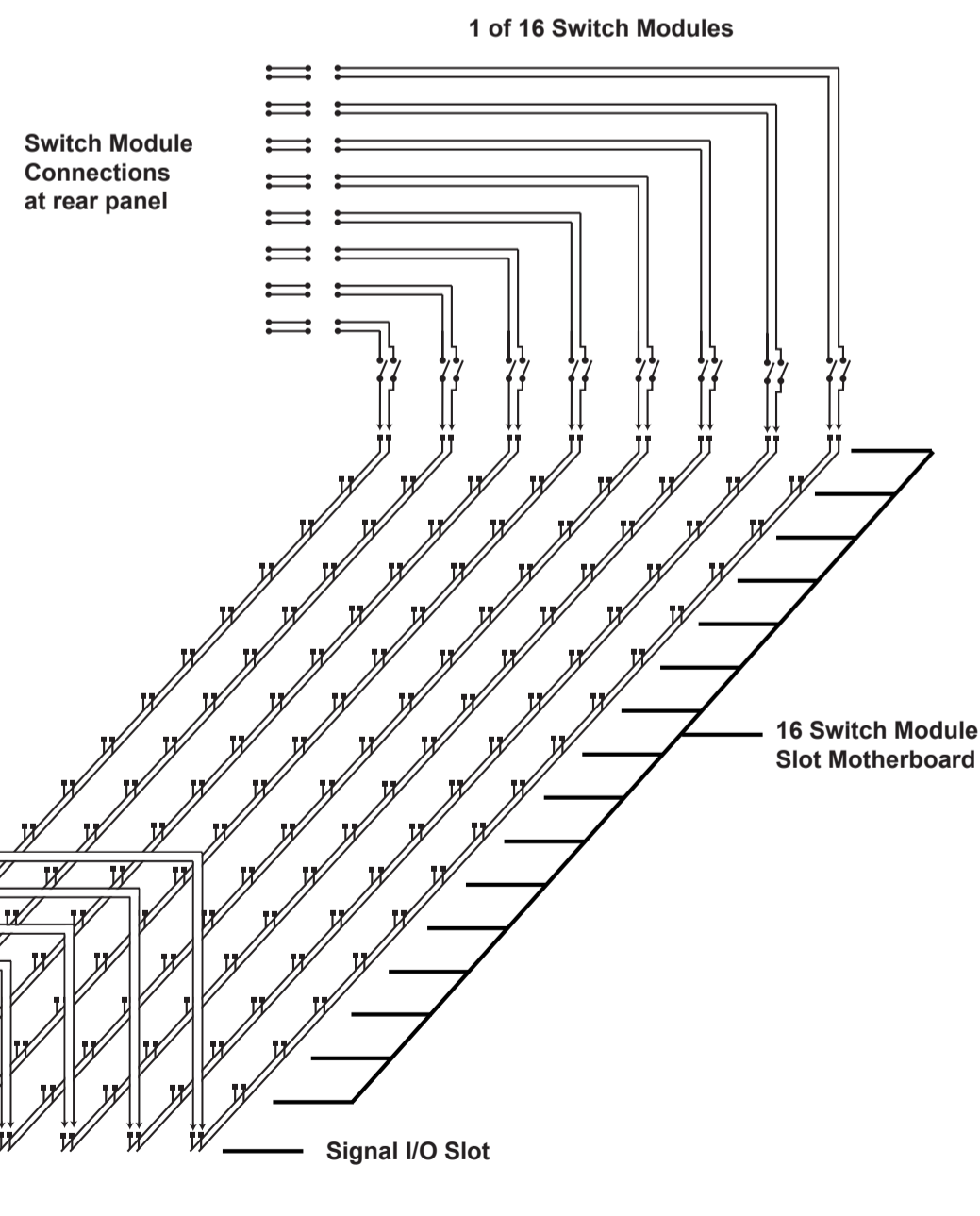


LX/128-MF 2 pole

Sw #



Phoenix Contact 16 Pin removable Screw Terminal mating connector with tie down for wiring is included with module



## Some Common Configurations

